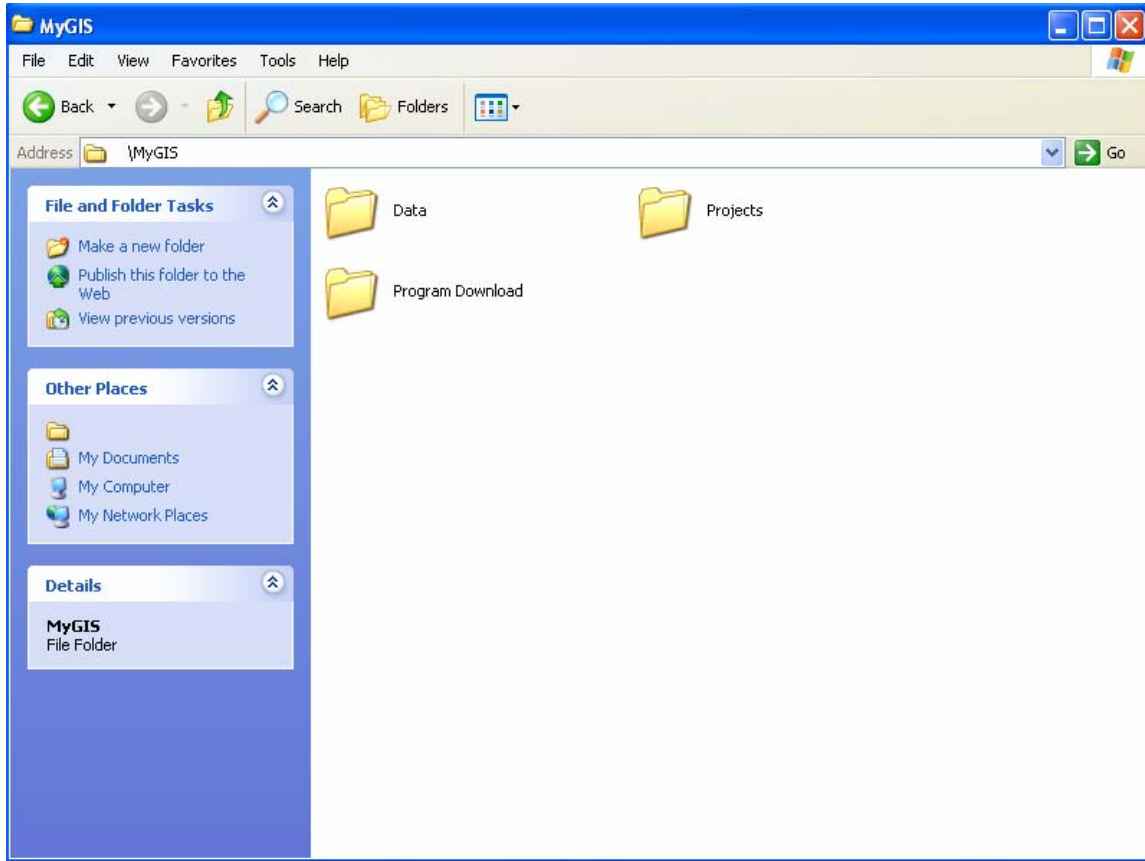


How to Create a Custom Map Using ArcExplorer

Step 1: Using Windows Explorer, create a MyGIS Folder to store your data files. Within your MyGIS folder create three new folders: Data, Projects, and Program Download.



Step 2: Click the hyperlink to download ArcExplorer:

<http://www.esri.com/software/arcexplorer/download9.html>

This screenshot should appear. Click the appropriate link for your system.

ArcExplorer 9.3—Java Edition: Download with Instructions

- [Download ArcExplorer 9.3 for Windows](#)
- Download ArcExplorer 9.3 for Unix
 - [Solaris](#)
 - [AIX](#)
 - [HP-UX](#)
- [Download ArcExplorer 9.3 for Linux](#)

Step 3: Register with ESRI. If you have already done so, enter your email address.

Downloads

Thank you for your interest in **ArcExplorer 9.3 (Windows)**.

ArcExplorer 9.3 (Windows)

To download this file, please [register](#) with us first.

You can also [update](#) your registration information.

If you have already registered, just enter your e-mail address.

E-mail Address:

Step 4: Click the hyperlink to download the ArcExplorer .zip file. Save the download to MyGIS\Programs Download.

Downloads

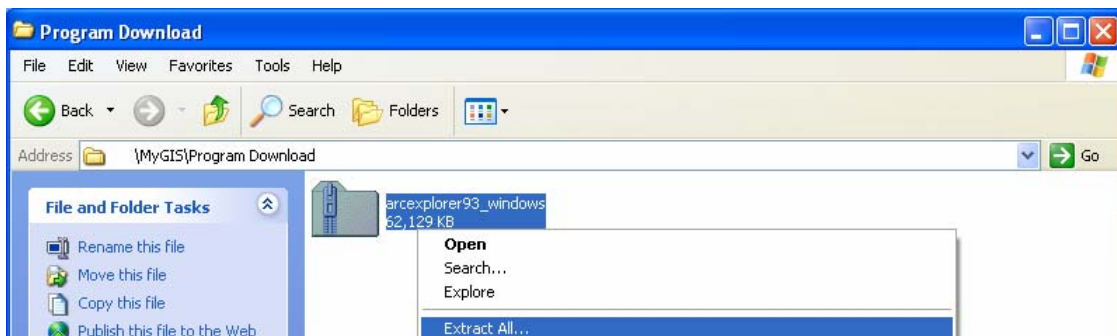
_____, thank you for your interest in ESRI.

To download **ArcExplorer 9.3 (Windows)**, select from the link(s) below. For faster downloading, choose a location close to you.

The size of the file is **60.6 MB**.

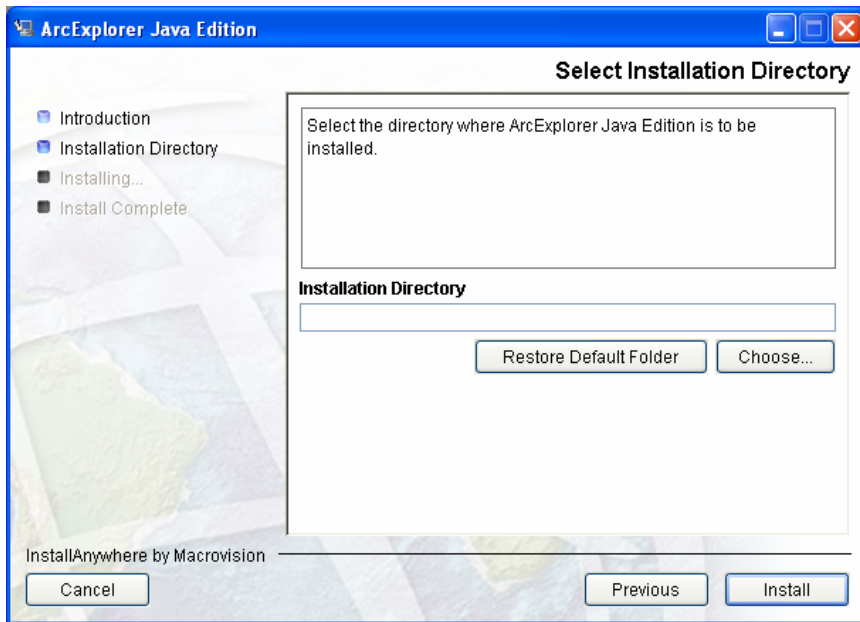
Location	Download
HTTP - Redlands CA USA	arcexplorer93_windows.zip

Step 5: Once the file is downloaded, open the folder containing the zip file.



Step 6: Right click on the zip file and “Extract All...”

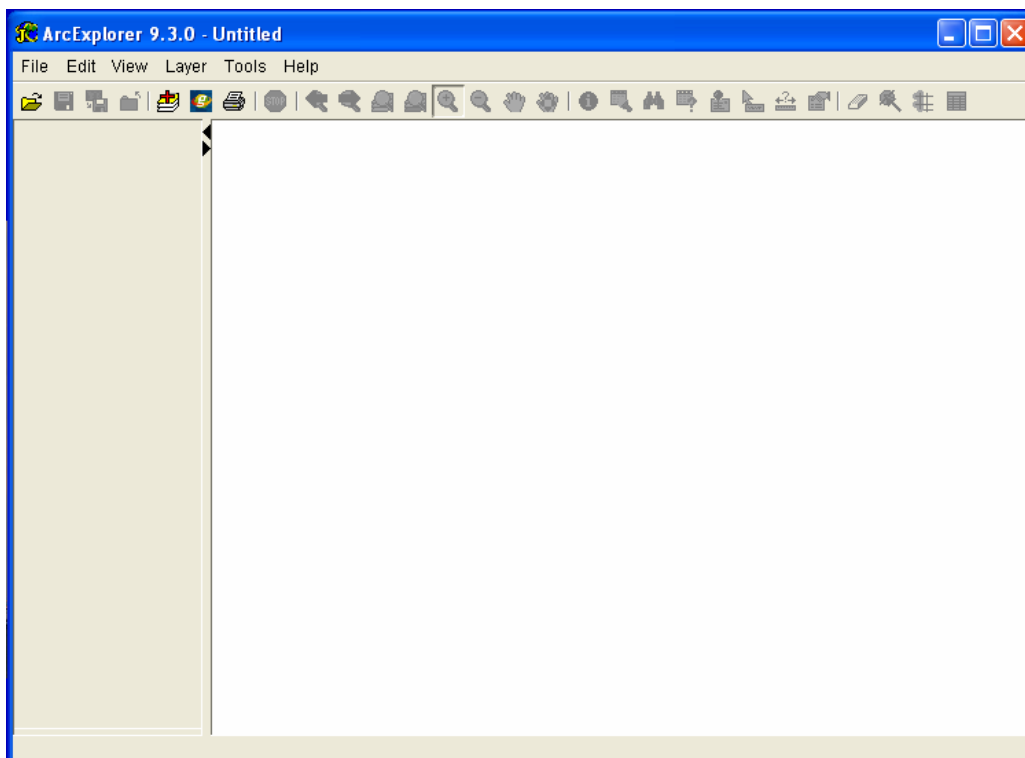
Step 7: Complete installation process installing ArcExplorer to your Program files.



Step 8: Once the install process is complete, open the Start Menu at the bottom left of your computer screen and navigate to Programs, ArcGIS, ArcExplorer.




Step 9: Now that ArcExplorer is open, click the minimize button in the upper right. We need to download data for our project.



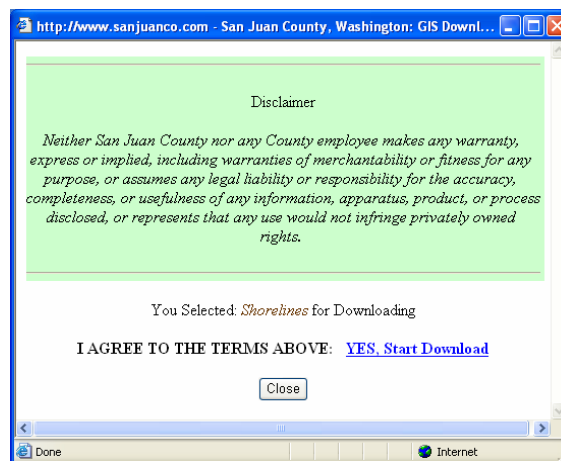
Step 10: Click the hyperlink to download data from the San Juan County GIS Data Download Library:

<http://www.sanjuanco.com/gis/gislib.aspx>.

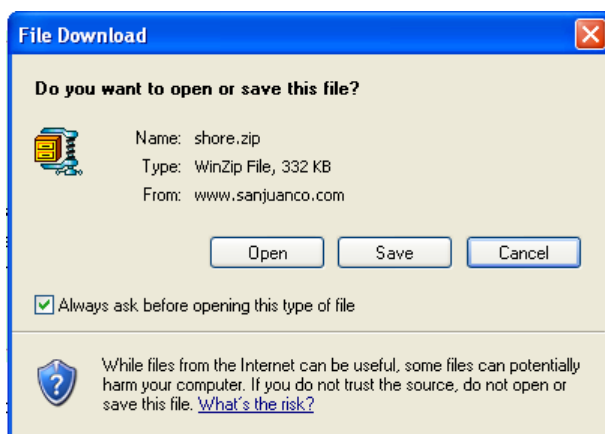
Step 10: Navigate to the bottom of the page. We are going to download the Islands Shoreline shapefile. Click the folder icon.

	Posted	Download	View Example
Topography			
Islands Shoreline	11/27/2002		
20 Foot Contours	08/16/2004		

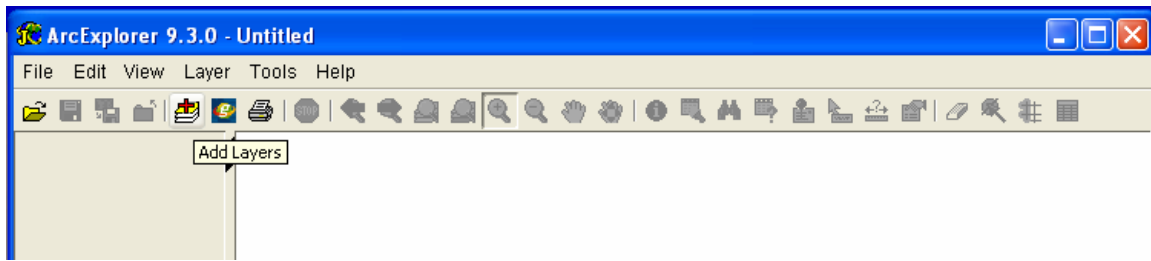
Step 11: A Disclaimer will appear. To download the data you must agree.



Step 12: You will be asked where you want to save the data. In your MyGIS\Data\ folder create a new folder titled "Shoreline". Save the Zip file here and extract its contents.

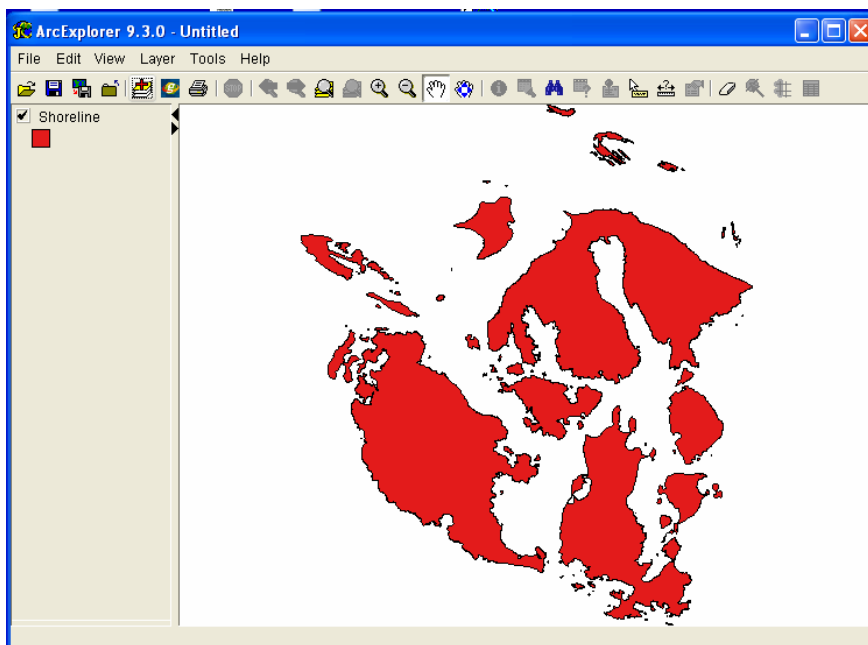


Step 13: Maximize ArcExplorer and click on the Add Layers button. It is a red plus symbol.

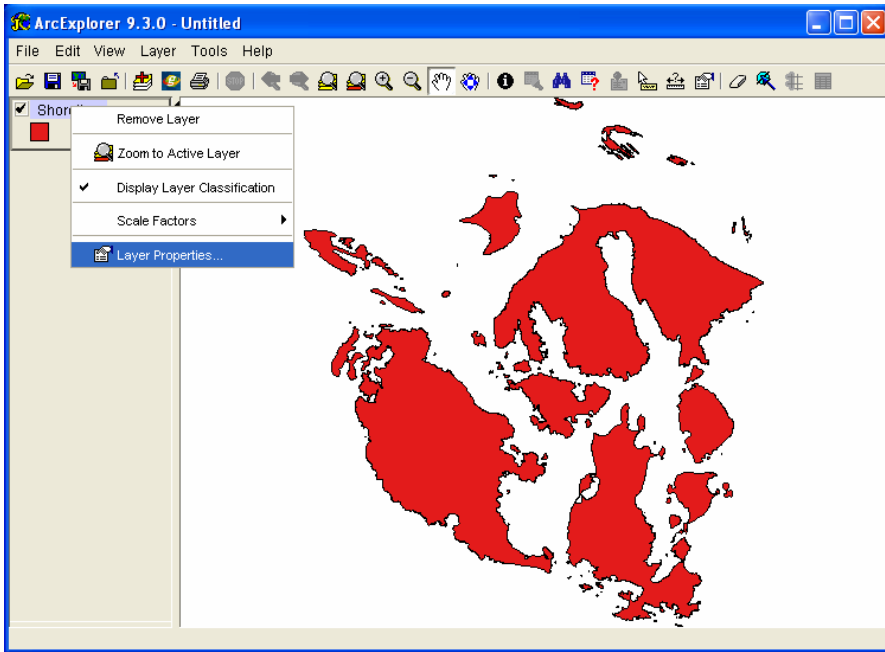


Step 14: Navigate to MyGIS\Data\Shoreline Folder. Double click the Shoreline dataset then close the Catalog.

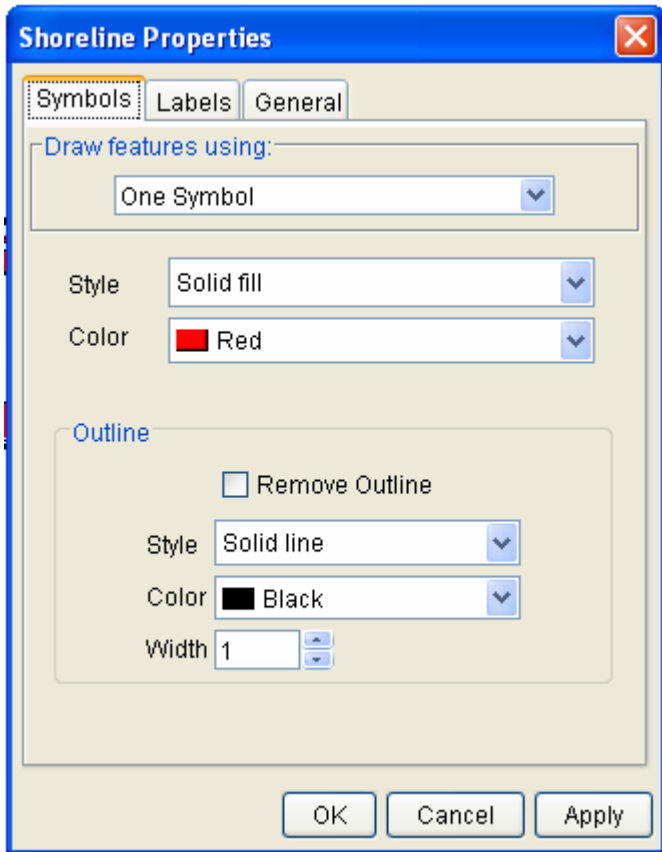
Step 15: Click the checkbox next to the Shoreline dataset. The islands in the county should appear in your map.



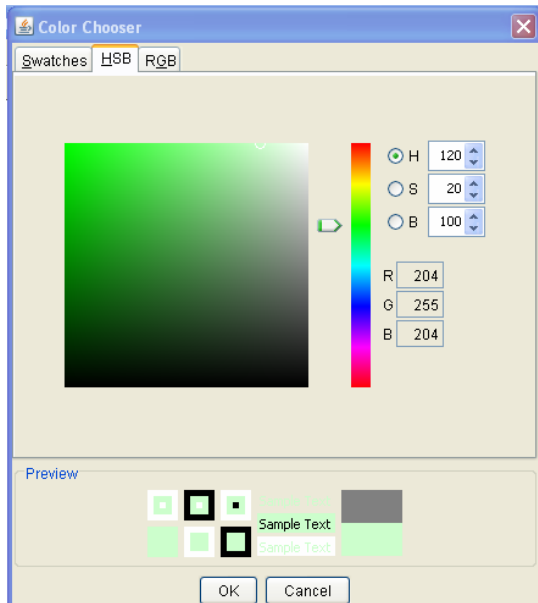
Step 16: Right click on Shorelines and navigate to Layer Properties.



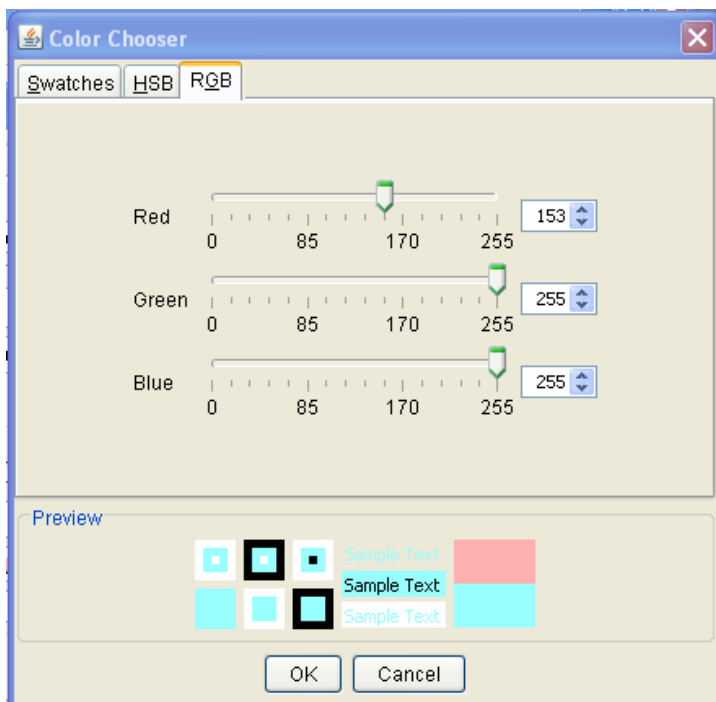
Step 17: Now we are going to change the color. Click the drop down arrow by the color red.



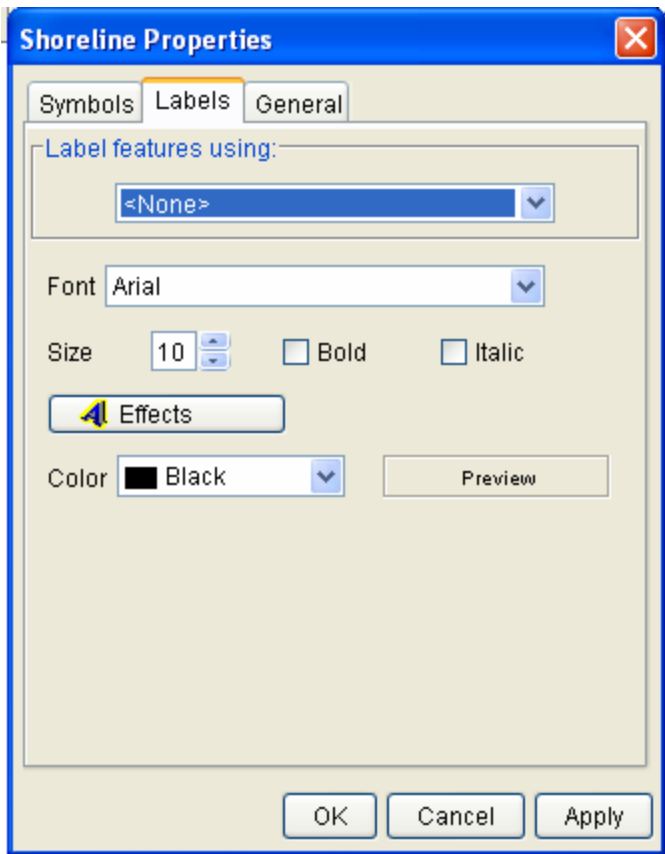
Navigate down to Custom. Under the Color Chooser click the HSB tab at the top. Type in the numbers 120, 20, 100. You should get a light green color.



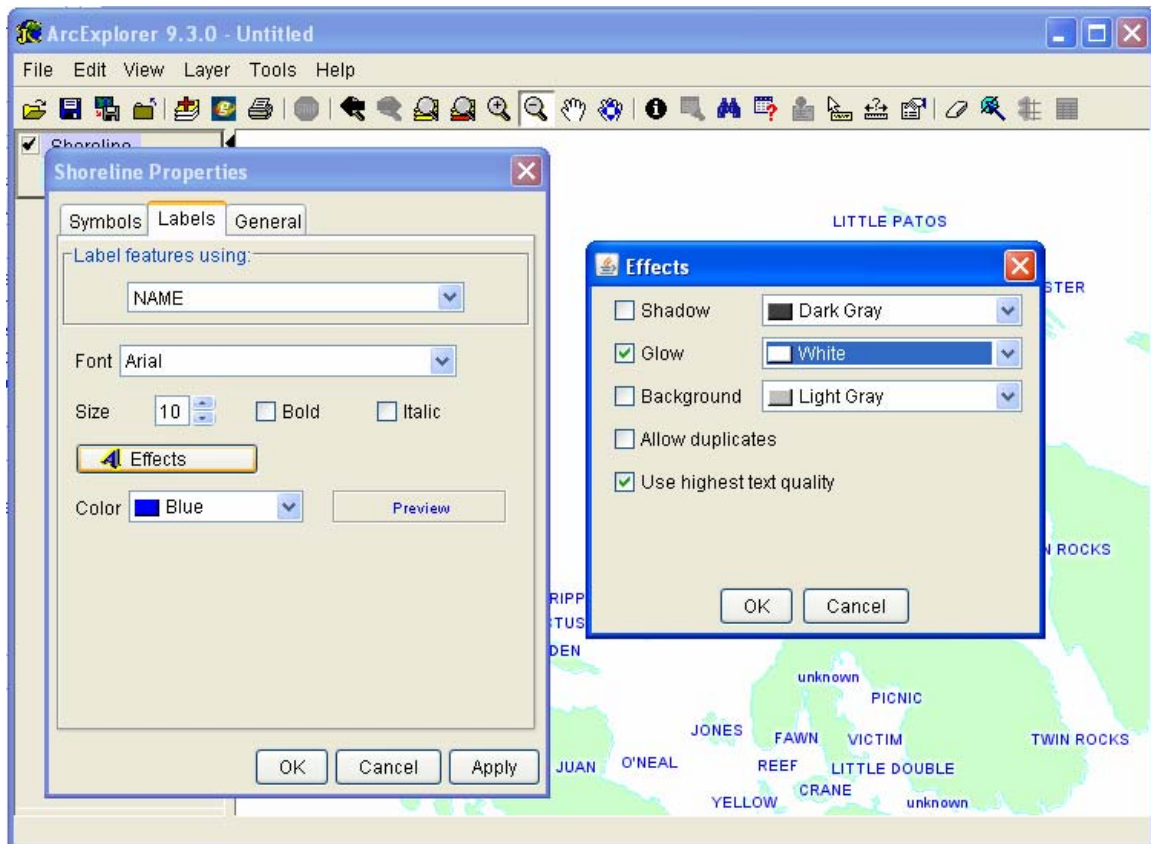
Step 18: Press OK and go back to the Symbols tab. Now we will change the Outline color. Click the drop down arrow and navigate to Custom. Under the RGB tab type in the numbers 153, 255, 255.



You should get a blue color. Press OK, and at the top of the Shoreline Properties tab click Labels.



Step 19: Click the drop down box under Label features using. Navigate to NAME. Next Click the Effects button. Check the box “Glow” and change the color to White. Also check the box for “Use highest text quality”. Click OK. Next change the color to Blue. Press Apply when finished.



The islands in the Shoreline dataset should be labeled with a blue text and white glow.

Step 20: Use the tools to Zoom In, Zoom Out, Pan, and Identify to check out features.



For additional help, click on the Help menu and select Help Contents. The help menu will instruct you on creating buffers, selecting features, and querying data.

Step 21: Save your map project by clicking on the File menu and choosing Save Project. Save your project in MyGIS\Projects. Next time you want to view this project, open ArcExplorer, click on the Open Project button (yellow folder icon), and navigate to MyGIS\Projects.

Step 22: Explore the GIS world. Download more data, make some maps, and most importantly have fun.