



GIS Day 2008

Discovering the World through GIS
Thursday, November 20

*Council Hearing Room
Legislative Building
55 Second St.
Friday Harbor, WA 98250*

10:00 am – 11:00 am: GIS for Professionals:
Beyond the Assessor's Parcel Search (Open to Public)

GIS for Professionals is geared towards local real estate agents, surveyors, delivery personnel, architects, contractors, and other professionals in our community who may benefit from GIS technology beyond the Assessor's Parcel Search. We will discuss types of GIS data that are available for public consumption as well as free or low cost GIS applications that will give you access to more tools and data. The GIS Team is starting development of new Internet mapping applications and we would like to share our ideas and get feedback from the community. The new 2008 aerial photographs will be unveiled and we will discuss how to obtain the photos. We will also be selling our new County map books that contain current roads, addresses, and a variety of other information.

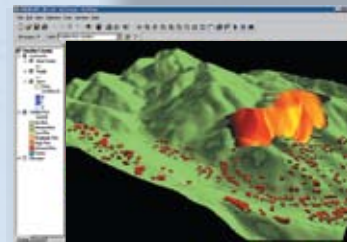
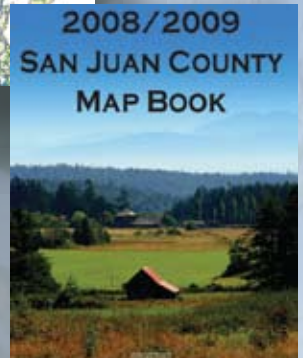
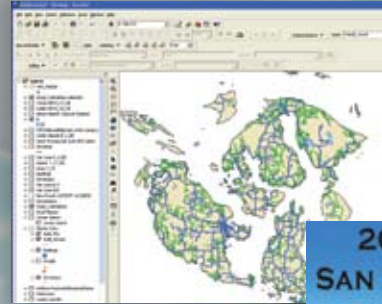
11:00 am – 2:00 pm: GIS Resource Center (Open to Public)

The GIS Team will be available during this time to answer questions related to GIS, including technical support, data availability, GIS applications, etc. We will also have our map books for sale.

2:00 pm – 3:00 pm: Data at Your Fingertips
(County Employees Only)

This seminar is designed for County employees who want to improve workflow efficiency and access data quickly and easily. Topics covered include how to access data from multiple departments in one place, data availability, GIS tools and applications, and answering questions using GIS. The new aerial photos and map books will be unveiled. We will also discuss the new Parcel Query that is in development and other future GIS projects. Finally, we will have plenty of time for questions and would like feedback that will help us serve you better!

<http://www.sanjuanco.com/publicworks/gis.aspx>



San Juan County GIS - Melissa Crane - (360) 370-0542