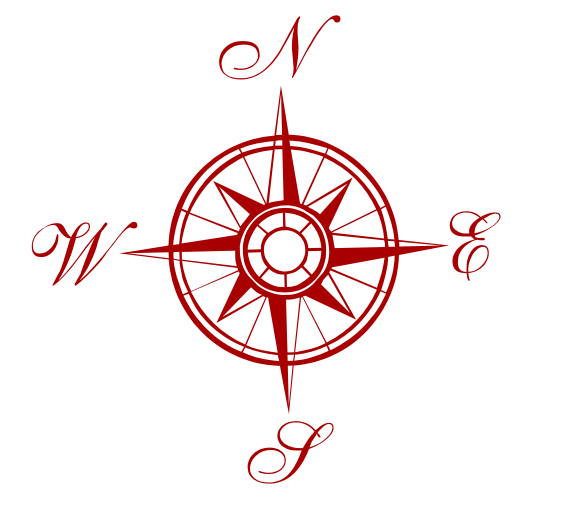
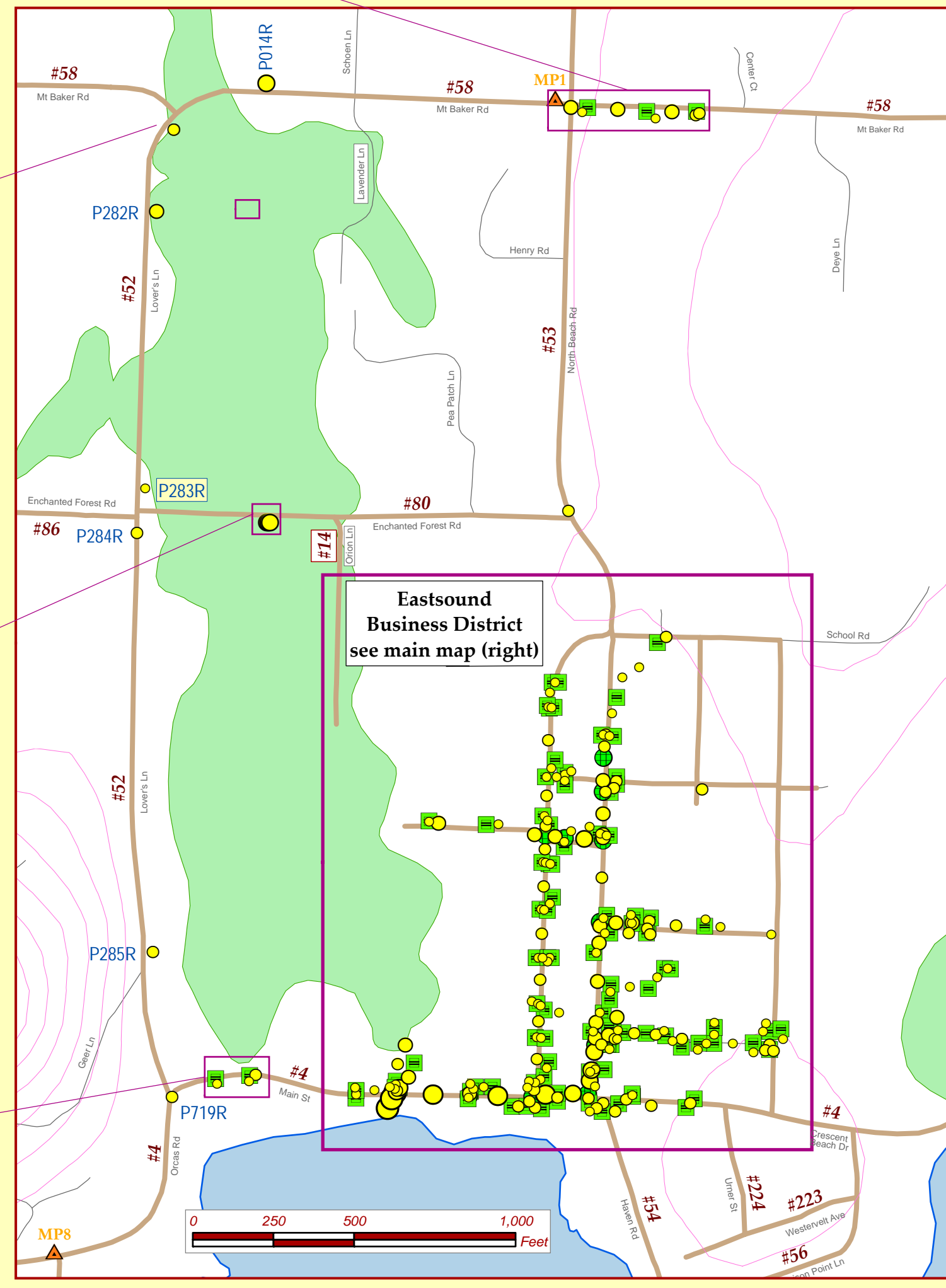
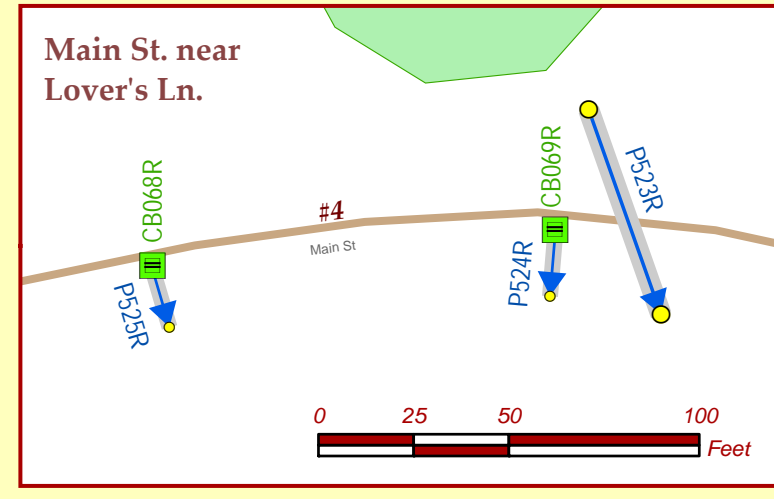
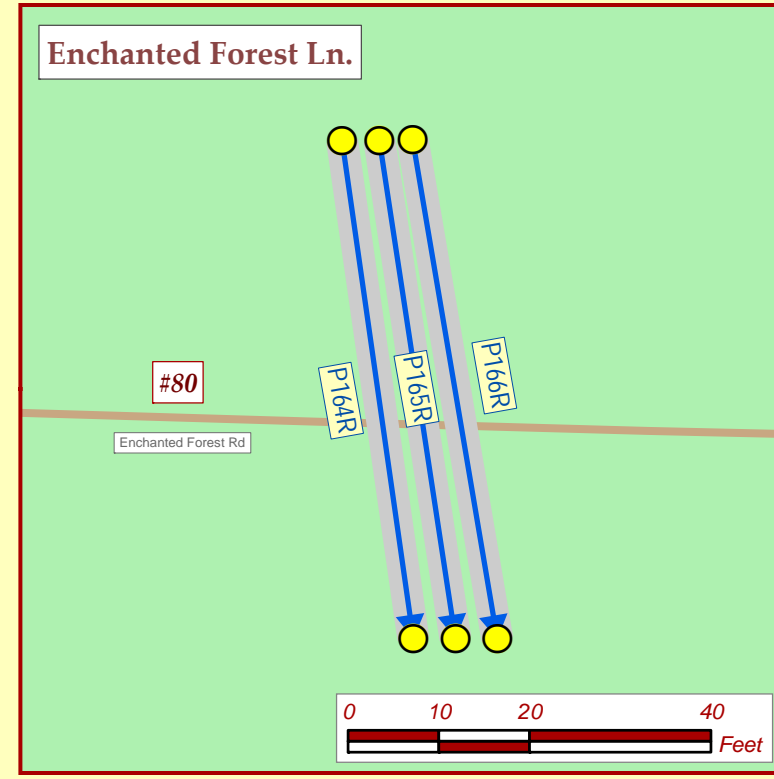
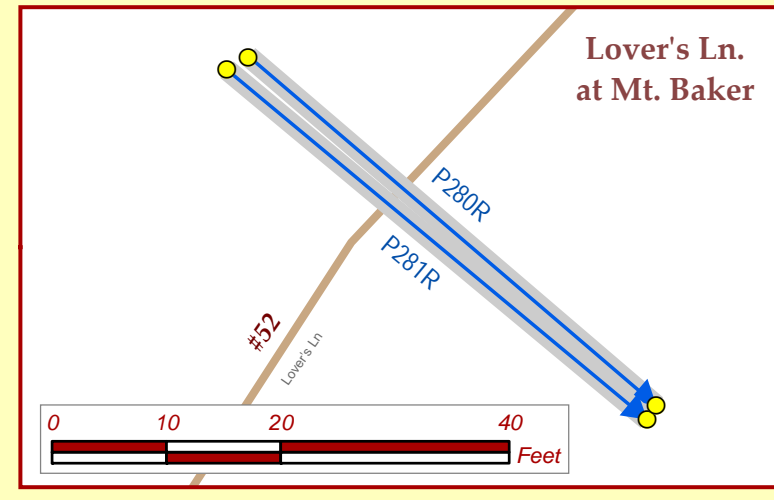
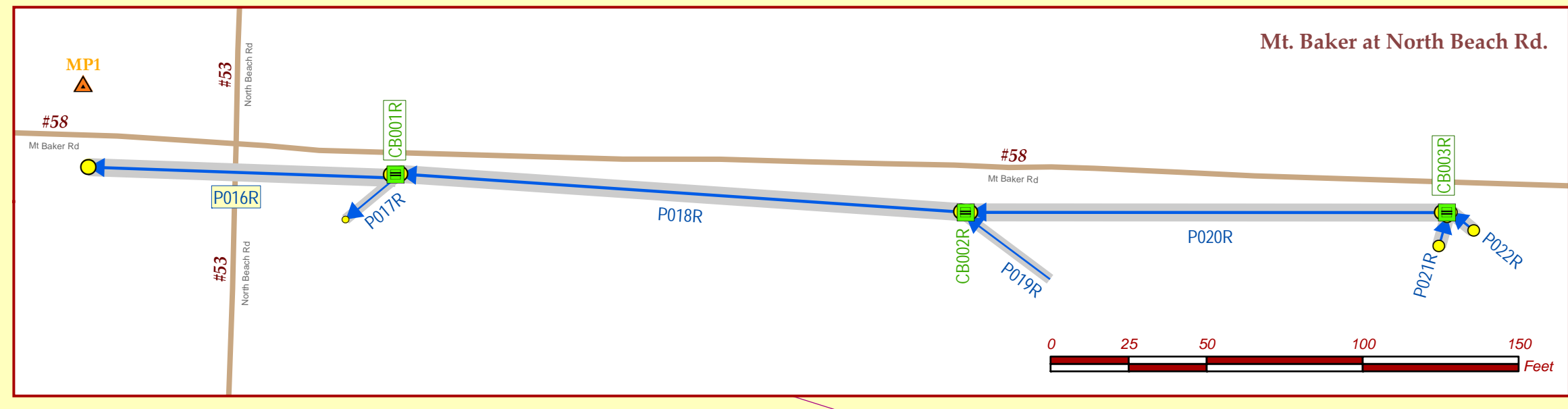


Eastsound Area Overview & Detail



Drainage Features

Culvert locations (overview)
Inlets / Outlets (insets & main map)

- 4, 6, 8 inches
- 10, 12 inches
- 15, 16, 18 inches
- 24, 30 inches
- 36, 48 inches
- >48 inches
- diameter unknown

Culverts (insets)

- 4, 6, 8 inches
- 10, 12 inches
- 15, 16, 18 inches
- 24, 30 inches
- 36, 48 inches
- >48 inches
- diameter unknown

Other Features

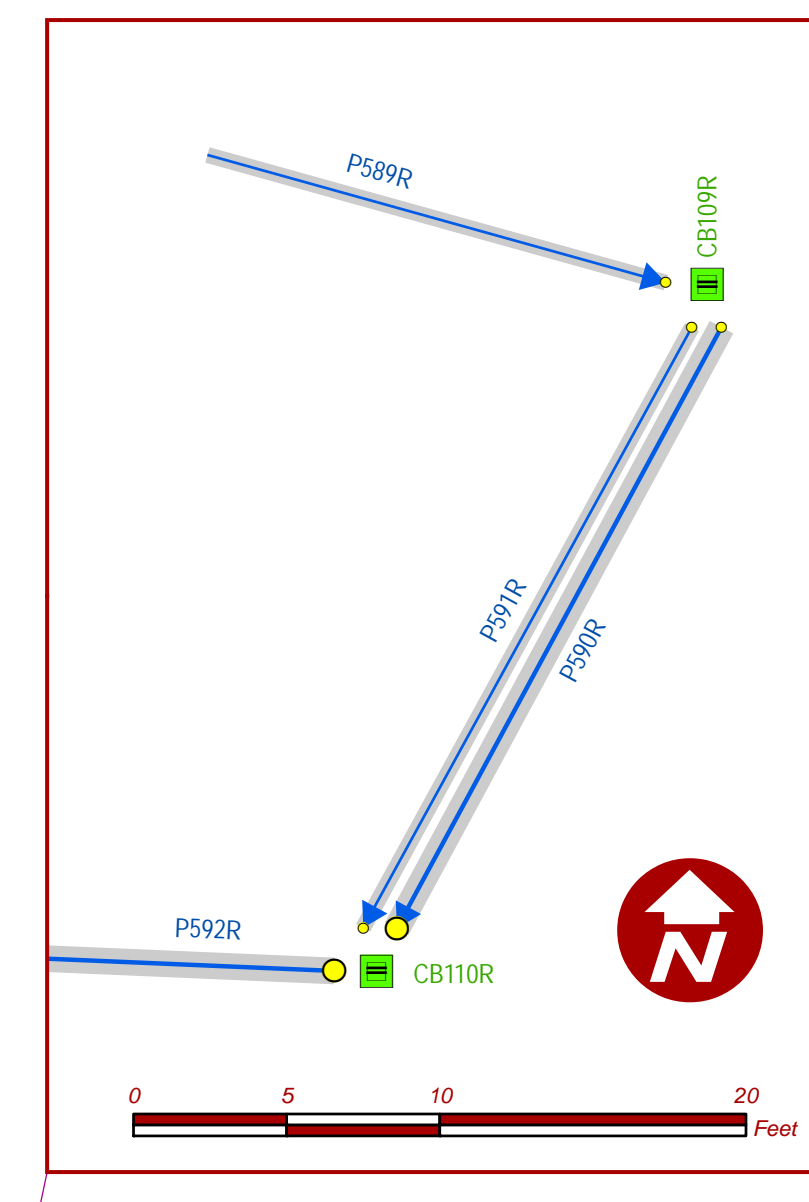
- Mileposts
- County roads
- Private roads
- 100 ft. contours

Legend:

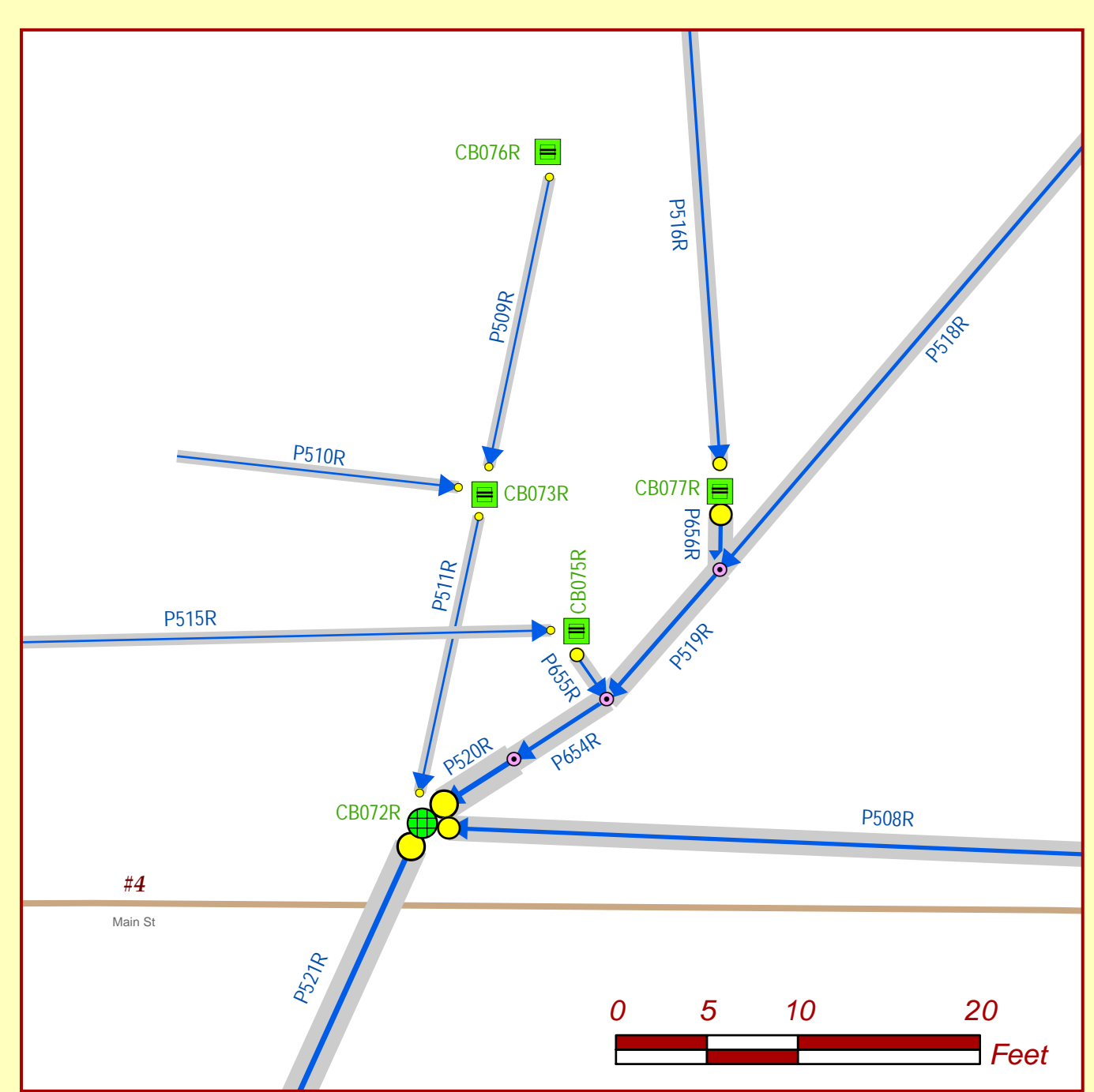
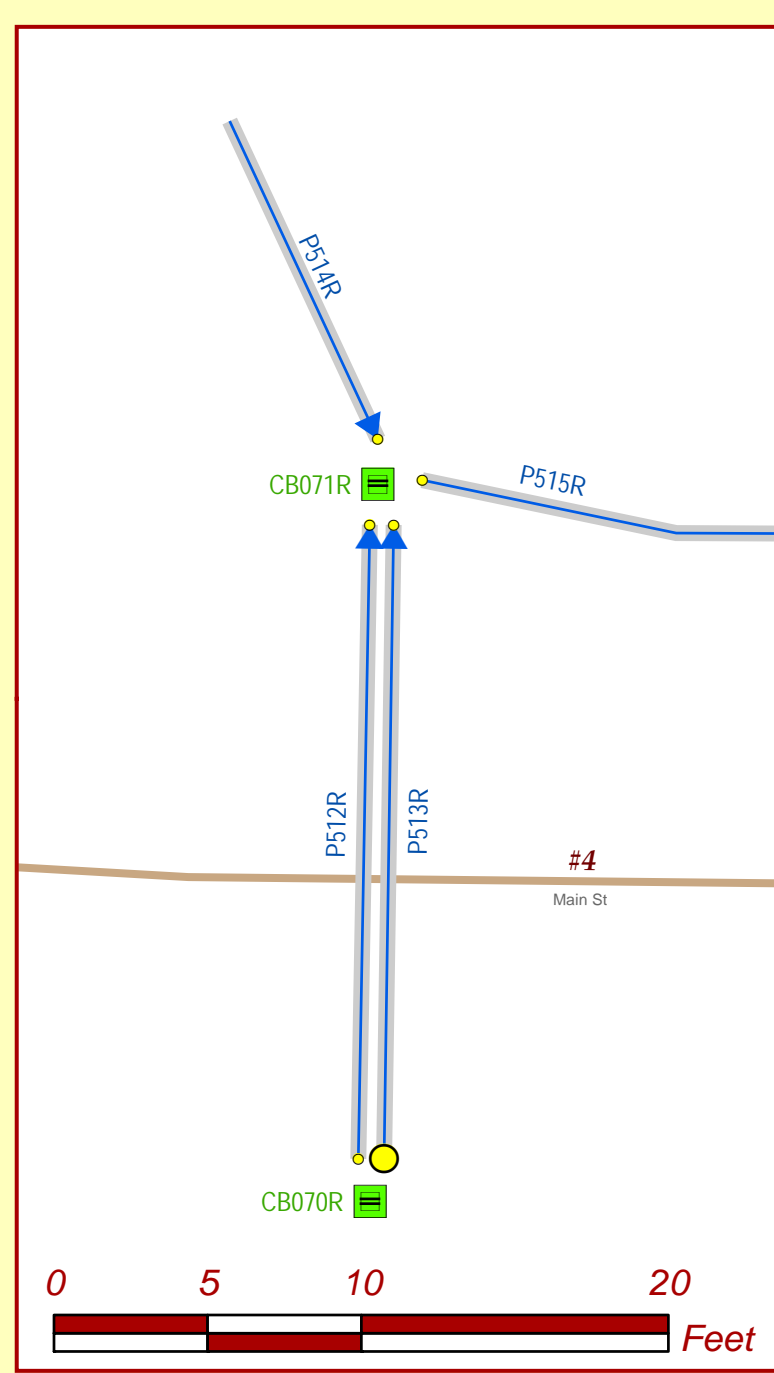
- Catch Basin
- Manhole
- Pipe connections
- Lakes
- Wetlands
- Streams
- Ditches

Scale: 0 40 80 Feet, 1:450

Eastsound Drainage Map
key to symbols



Main St. at Outlook Inn



SAN JUAN COUNTY PUBLIC WORKS
This map is a graphic representation derived from the San Juan County Geographic Information System. It is designed and intended for reference only and is not guaranteed to survey accuracy. This map is based on the best information available as of the publication date below:
last update: February 2005
drawn by: Fern Clark
December 2004