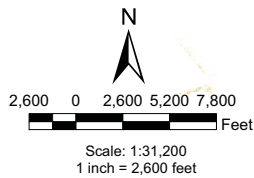




**Legend**

- Priority Species
- Smelt Spawning
- Sand Lance Spawning
- Eelgrass (outer line)
- ▨ Herring Holding/Spawning
- ▨ Salmon Habitat
- ▨ Kelp Beds
- ▨ Shellfish



This map is a graphic representation derived from San Juan County's Geographic Information System. It is designed and intended for reference only, and is not guaranteed to survey accuracy. Information represented in this map is subject to change without notice.



**Shoreline Fish and Wildlife Habitat Conservation Areas**

District 1  
San Juan County, Washington

Drawn By:  
ahwjc

Date:  
06/09

Revised:  
02/00