

Sample Ballot

2021 Primary Election
 August 3, 2021
 San Juan County

Precinct 101 Friday Harbor NW
 Page 1 of 1

Instructions

How to vote

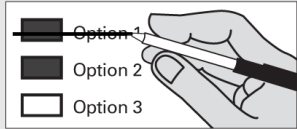


Use a dark blue or black ink pen to completely fill in the box to the left of your choice.

Do not use pencil.

Vote for one in each race/measure. If you vote for more than one, no votes will be counted for that race/measure.

If you make a mistake



Draw a line through the entire race/measure response. Then you may make another choice.

Do not use white-out.

Optional write-in



To vote for a candidate not listed, print the name on the blank line provided and fill in the box.



For your online voter's guide, ballot status, and to update voter information, visit votewa.gov.

i Who donates to campaigns

View contributors for measures at www.pdc.wa.gov
 Public Disclosure Commission
 Toll Free (877) 601-2828

Your ballot must be postmarked by August 3, election day, or deposited in a ballot box by 8 pm, election night.

No stamp needed to return your ballot!



Nonpartisan Office

Town of Friday Harbor

Town of Friday Harbor Mayor

4-year term - vote for one

Farhad Ghatan

Ray Jackson

Philip Carvalho

 Write-in

Lopez Island School Dist. No. 144

Lopez Island School Dist. No. 144
 Capital Projects Levy

The Board of Directors of Lopez Island School District adopted Resolution No. 20/21-9 concerning capital improvements levies. This proposition authorizes construction, building repairs and upgrades to the water system; and authorizes the following excess levies for such purposes on all taxable property within the District:

Collection Years	Approximate Levy Rate/\$1,000 Assessed Value	Levy Amount
2022	\$0.0920	\$139,000
2023	\$0.0902	\$139,000
2024	\$0.0884	\$139,000
2025	\$0.0867	\$139,000
2026	\$0.0850	\$139,000

Should this proposition be approved?

Yes

No

SJC Fire Protection Dist. No. 4

SJC Fire Protection Dist. No. 4
 Emergency Medical Services
 Property Tax Levy

Will San Juan County Fire Protection District No. 4, aka Lopez Island Fire & EMS, be authorized to impose a regular property tax levy of \$.50 or less per thousand dollars of assessed valuation for each of ten consecutive years beginning in 2022 to provide emergency medical care or emergency medical services?

Yes

No

47813

This page intentionally left blank